

The Painterly Portrait Collection II

Recipe Guide



www.greaterthangatsby.com

About the Painterly Portrait Collection II



The Painterly Portrait Collection II enhances color and texture to lend a surreal feel to your portrait images. This set uses advance Photoshop techniques to allow your images to feel like true pieces of art.

- 109 Painterly Portrait II Actions
- Compatible with Photoshop CS2-CS6, Creative Cloud (CC), and Elements 11-20
- Actions Easily Modified and Customized

Painterly Portrait II Actions

Beginning Brushes

Painterly Pure Smoother
Painterly Perfect Smoother
Painterly Skin Tone Palette
Painterly Skin Shine Palette
Painterly Lip Smoother
Painterly Eye Pop
Painterly Hair Texture
PLAY THEM ALL
FLATTEN

Clean & Simple Foundations

Tabula Rasa Foundation
Square One Foundation
Underexposed Foundation
PLAY THEM ALL

Shifting Tones

Green to Lemon
Green to Marigold
Green to Tiger Lily
Green to Butternut
Green to Pumpkin
Green to Sweet Potato
Green to Poppy
Green to Cranberry
Green to Pomegranate
Green to Plum
PLAY THEM ALL

Artistic Tones

Last Supper
The Kiss
Sleeping Gypsy
Arnolfini Marriage
Night Watch
Our Daily Bread
Creation of Adam
Christina's World
Self-Portrait
View of Toledo
Guernica
Breezing Up
Composition 8

Artistic Tones Cont.

School of Athens
Sunflowers
Birth of Venus
Flower Carrier
The Astronomer
PLAY THEM ALL

Painterly Textures

Klimit
Rousseau
Blake
Caravaggio
Much
Bondone
Lichtenstein
Rockwell
Kandinsky
Da Vinci
Vermeer
Turner
Van Rijn
De Goya
Botticelli
Seurat
Kahlo
Manet
Titian
El Greco

Finishing Brushes

Glowing Vibrance Brush
Warm Highlights Brush
Cool Highlights Brush
Fill Light Brush
Fill Shadow Brush
Extra Contrast Brush
Tack Sharp Details Brush
Dreamy Blur Brush
Blur Distractions Brush
Light Leak Brush
Bottom Haze Brush
Scenery Blending Brushes

Finishing Touches

Discover the Details
Contrast the Clarity
Conform the Clarity
Hike the Highlights
Hide the Highlights
Shed the Shadows
Ditch the Darks
Soften the Shot
Heat the Hasselblad
Cool the Canon

Finishing Vignettes

Medallion Vignette
Brunette Vignette
Rusty Vignette
Merlot Vignette
Majesty Vignette
Nightfall Vignette
Wintergreen Vignette
Shamrock Vignette
Wilderness Vignette
Super Depth Vignette
Pick-A-Color Vignette
Custom Color Vignette Brush

Finishing Tones

Expressionism
Impressionism
Realism
Romanticism
Cubism
Surrealism

Dodge & Burn

Painterly Dodge Brush
Painterly Burn Brush
Auto Dodge & Burn Brush
Auto Dodge Highlight Pop

Resize & Sharpen

Web Exact Dimension Resize & Sharpen
Sharpen for Print

Painterly Portrait II Actions

BEGINNING BRUSHES

Painterly Pure Smoother – smooths skin tone & retains texture

Painterly Perfect Smoother – smooths skin tone, lifts highlights & retains texture

Painterly Skin Tone Palette – allows you to paint on one or a combo of seven different tones on the skin

Painterly Skin Shine Palette – allows you to add a luminous lift in one of three tones

Painterly Lip Smoother – smooth texture & tone of lips

Painterly Eye Pop – increase clarity & brightness of eyes

Painterly Hair Texture – allows you to paint on an oil paint texture to hair

Painterly Portrait II Actions

CLEAN & SIMPLE FOUNDATIONS

Tabula Rasa Foundation {clean} – Cools greens, adds warmth to skin, adds contrast, lifts midtones & pops highlights

Square One Foundation {matte} – A clean matte foundation that warms the skin and pops the highlights

Underexposed Foundation {bright} – Lifts midtones and highlights to prep an underexposed image for further enhancement

Painterly Portrait II Actions

SHIFTING TONES

- Green to Lemon** - shifts greens to yellow tones
- Green to Marigold** - shifts greens to yellow-orange tones
- Green to Tiger Lily** - shifts greens to orange tones
- Green to Butternut** - shifts greens to muted orange tones
- Green to Pumpkin** - shifts greens to bold orange tones
- Green to Sweet Potato** - shifts greens to muted red-orange tones
- Green to Poppy** - shifts greens to bright red-orange tones
- Green to Cranberry** - shifts greens to cranberry red tones
- Green to Pomegranate** - shifts greens to fuchsia-red tones
- Green to Plum** - shifts greens to magenta tones



Painterly Portrait II Actions

ARTISTIC TONES

Last Supper {muted matte} - desaturates and cools while adding contrast

The Kiss {bright warmth} - brightens, warms & provides a soft creamy haze

Sleeping Gypsy {perfect clean} - adds drama to the image, cyan to greens & pops the subject

Arnolfini Marriage {dark rich} - deepens and enriches the tones of the image

Night Watch {cool green} - adds a deep cyan shift to greens, adds contrast & brightens skin tones

Our Daily Bread {lively matte} - adds warmth to the image, pops blue & adds a cream haze

Creation of Adam {vibrant green} - deepens the images & cools green to allow the subject to pop

Christina's World {blue matte} - warms, adds contrast & finishes with a cool haze

Self-Portrait {sunny warmth} - adds a golden hour warm wash to your image

View of Toledo {soft cool} - warms subject, cools green & adds a vintage tone to the image

Guernica {dirty matte} - darkens and adds a brown matte to the image

Breezing Up {bright cool} - adds a cool haze to the image

Composition 8 {dark bold} - deepens shadows, cools green & pops highlights for a dramatic effect

School of Athens {purple matte} - darkens and adds a magenta haze

Sunflowers {wild golden} - adds warmth, shifts green to gold & adds a soft yellow haze

Birth of Venus {deep lavender} - adds a muted vintage warmth & a green haze to highlights

Flower Carrier {punchy warmth} - warms and adds a rosy tone to your subject

The Astronomer {pastel mint} - adds orange to red and dramatically lightens green

Painterly Portrait II Actions

PAINTERLY TEXTURES

Klimit (no paint + light contrast) - deepens & adds light contrast

Rousseau (no paint + bright contrast) - brightens, deepens & adds contrast

Blake (no paint + clean contrast) - adds light contrast with a velvety feel

Caravaggio (no paint + milky matte) - desaturates & adds a creamy contrasted matte

Munch (no paint + extra rich) - adds dimension & deepens your background

Bondone (no paint + extra extra rich) - deepens and adds a dreamy quality to your image

Lichtenstein (light paint + no contrast) - adds a light paint texture to the image

Rockwell (light paint + light contrast) - deepens, adds light contrast & light paint texture

Kandinsky (light paint + bright contrast) - lightens, deepens, adds contrast & light paint texture

Da Vinci (light paint + clean contrast) - adds light contrast w/velvety feel & light paint texture

Vermeer (light paint + milky matte) - desaturates, adds a creamy matte & light paint texture

Turner (light paint + extra rich) - deepens your background, adds dimension, & light paint texture

Van Rijn (light paint + extra extra rich) - deepens, adds a dreamy quality & light paint texture

De Goya (heavy paint + no contrast) - adds a heavy paint texture to the image

Botticelli (heavy paint + light contrast) - deepens, adds light contrast & heavy paint texture

Seurat (heavy paint + bright contrast) - lightens, deepens, adds contrast & heavy paint texture

Kahlo (heavy paint + clean contrast) - adds light contrast w/velvety feel & heavy paint texture

Manet (heavy paint + milky matte) - desaturates, adds a creamy matte & heavy paint texture

Titian (heavy paint + extra rich) - deepens background, adds dimension, & heavy paint texture

El Greco (heavy paint + extra extra rich) - deepens, adds a dreamy quality & heavy paint texture

Painterly Portrait II Actions

FINISHING BRUSHES

Glowing Vibrance Brush - selectively add vibrance to your image

Warm Highlights Brush - selectively add warmth to your highlights

Cool Highlights Brush - selectively cool your highlights

Fill Light Brush - add fill light where desired

Fill Shadow Brush - add shadows where desired

Extra Contrast Brush - add extra contrast where desired

Tack Sharp Details Brush - sharpen details to bring extra focus to your subject

Dreamy Blur Brush - increase the look of bokeh where desired

Blur Distractions Brush - blur detailed parts of the image as needed

Light Leak Brush - add areas of light as desired

Bottom Haze Brush - add haze to the bottom of your image in your desired color range

Scenery Blending Brushes - select three colors from your background then use to unify tones

Painterly Portrait II Actions

FINISHING TOUCHES

Discover the Details - lifts shadows, recovers highlights and adds clarity

Contrast the Clarity - dehazes and adds clarity

Conform the Clarity - reduces clarity and adds a soft haze

Hike the Highlights - lifts highlights to give your image a pop

Hide the Highlights - reduces highlights

Shed the Shadows - lifts shadows

Ditch the Darks - brightens and reduces blacks

Soften the Shot - softens the image while retaining some detail

Heat the Hasselblad - adds warmth to the image

Cool the Canon - cools the image

Painterly Portrait II Actions

FINISHING VIGNETTES

Medallion Vignette - adds a light taupe vignette

Brunette Vignette - adds a warm brown vignette

Rusty Vignette - adds a dark red-orange vignette

Merlot Vignette - adds a dark magenta-pink vignette

Majesty Vignette - adds a muted purple vignette

Nightfall Vignette - adds an indigo vignette

Wintergreen Vignette - adds a muted dark cyan vignette

Shamrock Vignette - adds a green vignette

Wilderness Vignette - adds a very dark green vignette

Super Depth Vignette - deepens the image; mask off subject as desired

Pick-A-Color Vignette - select a tone for the vignette from the color picker

Custom Color Vignette Brush - select a tone from the image for the vignette

Painterly Portrait II Actions

FINISHING TONES

Expressionism {pretty warm} - adds a warm vintage wash to the image

Impressionism {slightly warm} - adds a warm sunny haze to the image

Realism {clean warmth} - cools greens and adds a soft warm wash

Romanticism {pure clean} - cools greens and warms the subject

Cubism {clean cool} - enhances blues and cools greens while warming the subject

Surrealism {fresh warmth} - cools greens and adds a soft vintage tone

DODGE & BURN

Painterly Dodge Brush - dodge the subject or other details for added dimension

Painterly Burn Brush - burn the subject or other details for added dimension

Auto Dodge & Burn Brush - use a soft brush to pop highlights & deepens shadows

Auto Dodge Highlight Pop - auto pops highlights and deepens shadows for a more sculpted look

Painterly Portrait II Recipe Guide



Tabula Rasa Foundation @ 35%
Night Watch @ 35%
Kahlo @ 54%
Glowing Vibrance Brush @ 45%
Scenery Blending Brushes
Contrast the Clarity @ 30%
Majesty Vignette @ 40%
Expressionism @ 76%
Dodge/Burn



Painterly Portrait II Recipe Guide



Green to Pomegranate @ 100%, Da Vinci @ 72%, Glowing Vibrance Brush (Painted on Highlights) @ 30%, Warm Highlights Brush, Tack Sharp Details Brush (Painted on Face), Light Leak Brush @ 50%, Discover the Details @ 28%, Hike the Highlights @ 10%, Soften the Shot @ 30%, Brunette Vingette, Romanticism @ 80%, Painterly Dodge & Burn & Auto Dodge Highlight brush

Painterly Portrait II Recipe Guide



Underexposed Foundation @ 22%
Green to Cranberry & Green to Pomegranate
The Astronomer @ 59% & Blake
Glowing Vibrance & Warm Highlights Brushes
Light Leak Brush
Scenery Blending Brushes
Contrast the Clarity & Soften the Shot
Heat the Hasselblad & Rusty Vignette
Romanticism



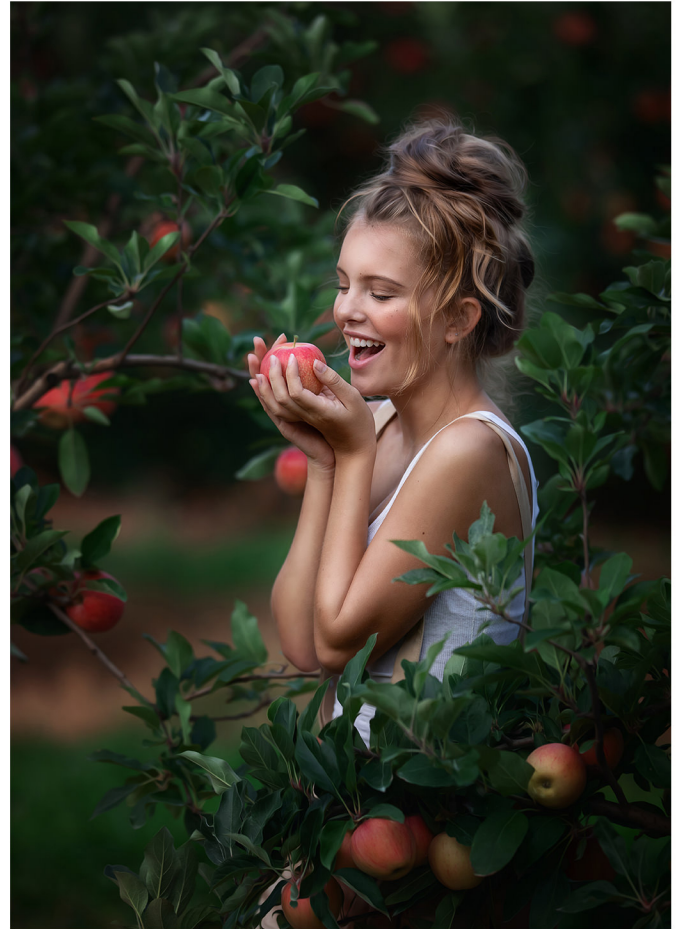
Painterly Portrait II Recipe Guide



Tabula Rasa @ 25%
Arnofini Marriage @ 42%
Seurat @ 50%
Light Leak
Blending Brushes
Merlot Vignette
Realism @ 27%
Auto Dodge & Burn Brush



Painterly Portrait II Recipe Guide



Tabula Rasa Foundation, Arnolfini Marriage @ 45%, Birth of Venus @ 37%,
Kahlo, Discover the Details, Brunette Vignette, Pick-A-Color Vignette &
Dodge/Burn

Painterly Portrait II Recipe Guide



Underexposed @ 20%
Green to Marigold @ 25%
Night Watch @ 65%
Da Vinci
Blur Distractions Brush
Bottom Haze Brush
Light Leak Brush
Contrast the Clarity (Painted on Sunflowers)
Hike the Highlights



Painterly Portrait II Recipe Guide



Painterly II Beginning Brush Palette
Tabula Rasa Foundation @ 20%
Green to Pomegranate
Self-Portrait @ 20%
Manet
Contrast the Clarity
Pick-A-Color Vignette
Cubism
Dodge/Burn



Painterly Portrait II Recipe Guide



Green to Marigold (Painted on Bus)
Arnolfini Marriage @ 45%
Kahlo @ 63%
Glowing Vibrance Brush
Discover the Details
Merlot Vignette
Impressionism @ 65%



Painterly Portrait II Recipe Guide



Underexposed Foundation @ 50%
Birth of Venus @ 40%
Turner @ 43%
Warm Highlights Brush
Bottom Haze Brush (Added More Lavender)
Contrast the Clarity
Majesty Vignette



Painterly Portrait II Recipe Guide



Painterly II Beginning Brush Pallet
Tabula Rasa Foundation (Painted on Subject @ 50%)
Composition 8 @ 43%
Da Vinci
Warm Highlights & Glowing Vibrance Brushes
Scenery Blending & Blur Distractions Brushes
Contrast the Clarity
Dodge/Burn & Auto Dodge Highlight Pop



Painterly Portrait II Recipe Guide



Tabula Rasa Foundation @ 30%
Creation of Adam @ 40%
Kandinsky @ 60%
Turner @ 30%
Merlot Vignette
Discover the Details (Inverted/Painted @ 50%)
Romanticism @ 20%
Glowing Vibrance Brush

