

The Bohemian Rhapsody Collection Recipe Guide



www.greaterthangatsby.com

About the Bohemian Rhapsody Collection



The Bohemian Rhapsody Collection was designed to capture a photography style that exudes a free-spirited, artistic vibe with an emphasis on unique and unconventional imagery. It is all about warm, earthy tones and vintage vibes. Add warmth, texture, and vibrance to your photos.

- Includes 112 Actions
- This set is Compatible with Photoshop Creative Cloud (CC) & Photoshop 2021- Current
- Actions Easily Modified and Customized

NOTE: Due to the integration of AI, this collection is **NOT** compatible with Photoshop Elements

Bohemian Rhapsody Actions

FOR INTERNATIONAL USERS

Convert to Background Layer

EXPAND THE CANVAS

Expand The Canvas {Left}
Expand The Canvas {Right}
Expand The Canvas {Up}
Expand The Canvas {Down}

UNDEREXPOSED PREPWORK

Gentle Light + Clean
Gentle Light + Green
Gentle Light + Magenta
Radiant Light + Clean
Radiant Light + Green
Radiant Light + Magenta
Blue Hour Fix + Clean
Blue Hour Fix + Green
Blue Hour Fix + Magenta
Overcast Lift + Clean
Overcast Lift + Green
Overcast Lift + Magenta
Twilight Boost + Clean
Twilight Boost + Green
Twilight Boost + Magenta
PLAY THEM ALL
FLATTEN AFTER THIS SECTION

OPTIONAL AUXILIARY BOOST

Exposure +
Exposure ++
Exposure +++
FLATTEN AFTER THIS SECTION

A.I. ADAPTIVE BRUSHWORK

Pop The Subject - Clean
Pop The Subject - Green
Pop The Subject - Magenta
Boost The Background - Clean
Boost The Background - Green
Boost The Background - Magenta
Enhance The Sky - Clean
Enhance The Sky - Warmer
Enhance The Sky - Cooler
FLATTEN AFTER THIS SECTION

ONE-CLICK COLOR BASE

Is This The Real Life
Is This Just Fantasy
Caught In A Landslide
No Escape From Reality
Open Your Eyes
Look Up To The Skies And See
PLAY THEM ALL

EXPAND DYNAMIC RANGE

I'm Just A Poor Boy
I Need No Sympathy

CLEAN TONE ENHANCEMENTS

I See A Little
Silhouetto
Of A Man
Scaramouch I
Scaramouch II
Will You Do
The Fandango
Thunderbolts
And Lightning
Very Very
Frightening Me
PLAY THEM ALL

MOVABLE SUNLIGHT

Galileo Galileo I
Galileo Galileo II
Galileo Figaro
Magnificoo

ENHANCEMENT BRUSHES

Easy Come
Easy Go
Little High
Little Low
Carry On I
Carry On II
Mama Mia I
Mama Mia II
Let Me Go
Will You Let Me Go
Never Let You Go
PLAY THEM ALL

BACKGROUND BRUSHES

For Me
For Meeeee
Spit In My Eye
Love Me And Leave Me
Oh Baby
Just Gotta Get Out
Right Outta Here
PLAY THEM ALL

ARTISTIC COLOR GRADING

FLATTEN BEFORE THIS SECTION
I Want To Break Free
We Will Rock You
Under Pressure
We Are The Champions
I Want It All
Somebody To Love
Crazy Little Thing Called Love
Dont Stop Me Now
You're My Best Friend
Another One Bites The Dust
PLAY THEM ALL

FINISHING EFFECTS

A Morning At The Piano
A Day At The Races
An Evening At Live Aid
A Night At The Opera

MICRO ADJUSTMENTS

Nothing {Bright Pop}
Really {Neutral Pop}
Matters {Dark Drop}
Anyone {Bright Contrast}
Can {Neutral Contrast}
See {Dark Contrast}
Nothing {Little Warmer}
Really {Little Cooler}
Matters {Little Greener}
To {Little Magenta-er}
Me {Soft Haze}
PLAY THEM ALL

CLASSIC B&W CONVERSION

Any Way The Wind Blows

RESIZE, SHARPEN & LOGO

Web Exact Dimension Resize & Sharpen
Sharpen for Print
Watermark/Logo Placement

Bohemian Rhapsody Actions

FOR INTERNATIONAL USERS

Convert to Background Layer – this action is for our international users only. It translates the first layer (no matter the language) to the word “background” for our actions to function properly.

EXPAND THE CANVAS

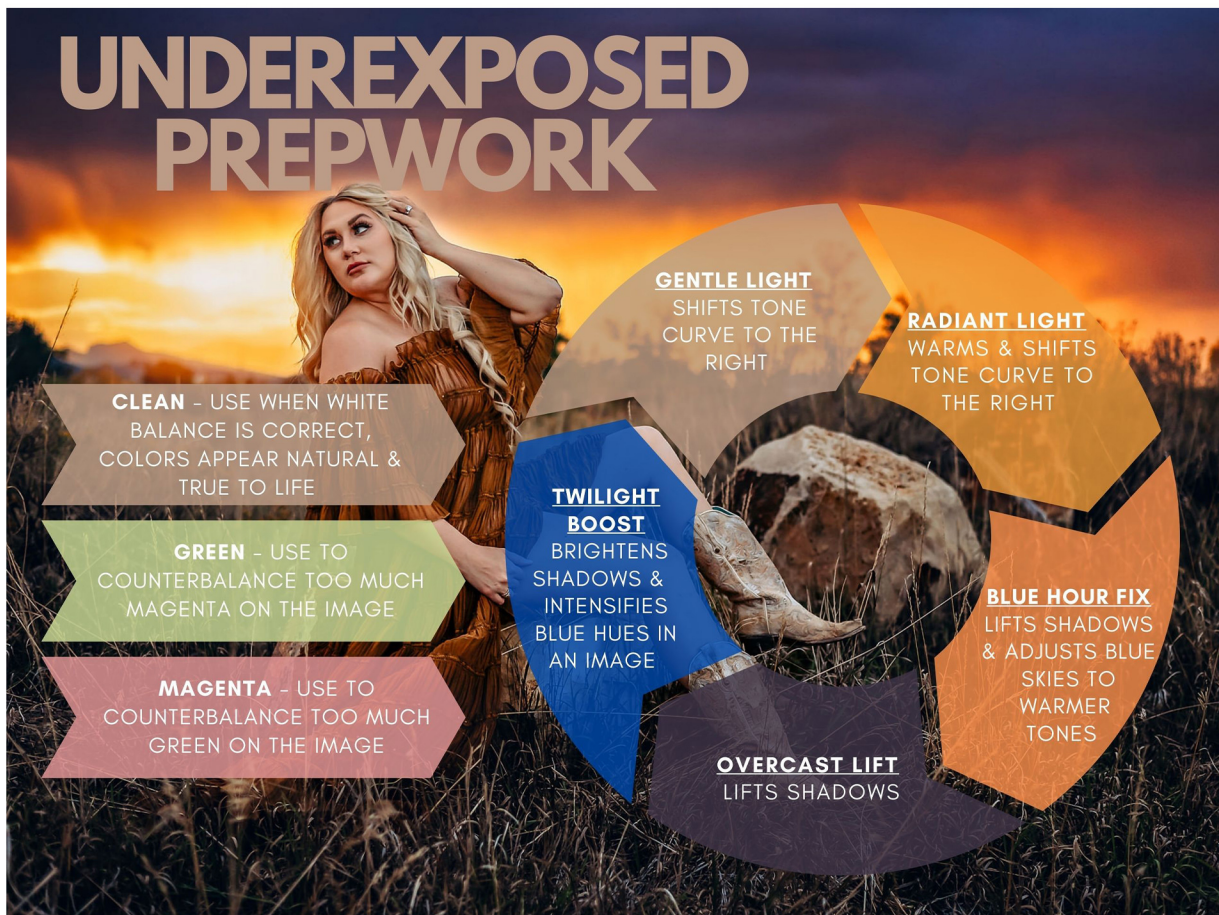
Expand The Canvas - Extends the area of your picture to the left, right, up or down as desired. Once the area is expanded, use the technique taught on our Youtube channel to fill-in the expanded area.



Bohemian Rhapsody Actions

UNDEREXPOSED PREPWORK

In order to render bold, colorful, dramatic skies & backgrounds, it is best to slightly underexpose your image. This section is the perfect prepwork for the next step to create dynamic, colorful images.



UNDEREXPOSED PREPWORK

CLEAN - USE WHEN WHITE BALANCE IS CORRECT, COLORS APPEAR NATURAL & TRUE TO LIFE

GREEN - USE TO COUNTERBALANCE TOO MUCH MAGENTA ON THE IMAGE

MAGENTA - USE TO COUNTERBALANCE TOO MUCH GREEN ON THE IMAGE

TWILIGHT BOOST
BRIGHTENS SHADOWS & INTENSIFIES BLUE HUES IN AN IMAGE

GENTLE LIGHT
SHIFTS TONE CURVE TO THE RIGHT

RADIANT LIGHT
WARMS & SHIFTS TONE CURVE TO THE RIGHT

BLUE HOUR FIX
LIFTS SHADOWS & ADJUSTS BLUE SKIES TO WARMER TONES

OVERCAST LIFT
LIFTS SHADOWS

Bohemian Rhapsody Actions

OPTIONAL AUXILIARY BOOST

The auxiliary boost actions shift the tone curve further to the right as desired.

A.I. ADAPTIVE BRUSHWORK

Pop The Subject - Clean – uses power of AI to brighten & warm just your subject

Pop The Subject - Green – uses power of AI to brighten, warm & up greens on just your subject

Pop The Subject - Magenta – uses power of AI to brighten, warm & up magentas on just your subject

Boost The Background - Clean – uses the power of AI to add contrast, clarity & vibrance to just your background

Boost The Background - Green – uses the power of AI to add contrast, clarity, vibrance & up greens on just your background

Boost The Background - Magenta – uses the power of AI to add contrast, clarity, vibrance & up magentas on just your background

Enhance The Sky - Clean – uses the power of AI to bring details, drama & vibrance back into the sky

Enhance The Sky - Warmer – uses the power of AI to warm & to bring details, drama & vibrance back into the sky

Enhance The Sky - Cooler – uses the power of AI to cool & to bring details, drama & vibrance back into the sky

Bohemian Rhapsody Actions

ONE-CLICK COLOR BASE

Is This The Real Life {Subtle Clean} – gently warms, brightens skin tones, adds contrast & brings focus to your subject while maintaining the green tones

Is This Just Fantasy {Subtle Warmth} – warms, brightens shadows, adds a touch of contrast & brings focus to your subject

Caught In A Landslide {Bold Clean} – warms, adds depth & brings focus to your subject

No Escape From Reality {Bold Warmth} – radiantly warms, adds depth, gently lifts shadows & brings focus to your subject

Open Your Eyes {Vibrant Colorburst} – adds glowing warmth & vibrance, lifts shadows & brings focus to your subject

Look Up To The Skies And See {Clarity} – adds contrast & clarity to the image

EXPAND DYNAMIC RANGE

I'm Just A Poor Boy {Dodge + Darken} – use to dodge the highlights on the subject for added dimension

I Need No Sympathy {Burn + Bright Brush} – use to burn the shadows on the subject for added dimension

Note: Watch our YouTube tutorial video to see how to apply & use the “Expand Dynamic Range” actions

Bohemian Rhapsody Actions

CLEAN TONE ENHANCEMENTS

I See A Little {Optimal Color} - warms, adds vibrance & shifts tone curve to the right
Silhouetto {Lively Color} - warms, adds vibrance & adds a sun-kissed tone to skin
Of A Man {Chromatic Lift} - reduces highlights & cools greens, brightens & adds depth to subject
Scaramouch I {Mild Mute} - desaturates greens, adds vibrance & shifts tone curve right
Scaramouch II {Wild Mute} - warms, desaturates greens, ups vibrances & shifts tone curve right
Will You Do {Dark Forest} - desaturates & mutes greens & finishes with a film-like emulsion
The Fandango {Mountain Air} - deepens & desaturates greens while adding a bronze finish to skin
Thunderbolts {Slight Bronze} - adds a bronze, vintage tone to the image
And Lightning {Bright Boost} - increases the dynamic range to the image bring focus to your subject
Very Very {Mercury Matte} - adds a smokey matte to the image
Frightening Me {Simple Color} - brightens & adds a warm, lively finish to an the image

MOVABLE SUNLIGHT

Galileo Galileo I {Direct Sun} - an orange to very dark orange gradient light mimicking backlit sun
Galileo Galileo II {Golden Hour} - a sheer orange to dark orange hazy gradient light
Galileo Figaro {Diffused Sun} - a very soft orange to orange gradient light
Magnificoo {Blue Hour} - a very soft orange to muted grayish-orange gradient light

Bohemian Rhapsody Actions

ENHANCEMENT BRUSHES

- Easy Come {More Light} - paint on to selectively add a midtone boost to desired areas
- Easy Go {Less Light} - paint on to selectively reduce midtones on desired areas
- Little High {Vibrant Color} - paint on to add vibrance & saturation to desired areas
- Little Low {Muted Color} - paint on to lower vibrance & saturation on desired areas
- Carry On I {Halt Highlights} - paint on selectively reduce highlights
- Carry On II {Lift Shadows} - paint on to lift shadows on desired areas
- Mama Mia I {Sharpen Details} - paint on to selectively sharpen desired details of the image
- Mama Mia II {Cancel Noise} - paint on to selectively reduce noise on desired areas
- Let Me Go {Reduce Yellows} - paint on to selectively desaturate yellows
- Will You Let Me Go {Reduce Reds} - paint on to selectively desaturate reds
- Never Let You Go {Reduce Blues} - paint on to selectively desaturate blues

BACKGROUND BRUSHES

- For Me {Perfect Greens} - paint on to decrease highlights & shift to a more sage-green tone
- For Meeee {Morning Fog} - paint on to add a soft creamy haze to desired areas of the image
- Spit In My Eye {Sparkling Water} - paint on to give water a soft blue tone with crystal highlights
- Love Me And Leave Me {Warm Sky} - paint on to add warmth to a cooler sky
- Oh Baby {Cotton Candy Sky} - paint on to add a magenta tone to the sky
- Just Gotta Get Out {Stormy Sky} - paint on to add depth & dimension to the sky
- Right Outta Here {Dramatic Sky} - paint on to add dramatic & deep effect to the sky

Bohemian Rhapsody Actions

ARTISTIC COLOR GRADING

- I Want To Break Free {Mood Ring}** - deepens, cools greens & adds an eggshell tone to highlights
- We Will Rock You {Polished Copper}** - deepens, cools greens & adds a warm copper wash to skin
- Under Pressure {Tarnished Copper}** - deepens, warms skin & adds a bronze wash
- We Are The Champions {Citrine Matte}** - lowers highlights & adds a subtle creamy-yellow matte
- I Want It All {Cheyenne Cyan}** - lowers highlights, adds depth & cyan shift & bronze finish to skin
- Somebody To Love {Muted Sage}** - warms, desaturates greens & lifts shadows
- Crazy Little Thing Called Love {Bronze}** - adds depth & varying degrees of earthtones
- Dont Stop Me Now {Purified Light}** - adds depth & cools while maintaining warmth on skin
- You're My Best Friend {Countryside}** - cools greens & deepens midtones & shadows
- Another One Bites The Dust {Golden}** - adds contrast, vintage wash & brings focus to subject

FINISHING EFFECTS

- A Morning At The Piano {HS Portraiture-ish}** - enhances, brightens, gently warms & evens skin tone in headshot portraits
- A Day At The Races {PB Portraiture-ish}** - enhances, illuminates, gently warms & evens out skin tones on environmental portraits
- An Evening At Live Aid {Soften Details}** - gently softens details for the perfect photo finish
- A Night At The Opera {Painterly-ish}** - introduces a soft contrast with a velvety texture & mild painterly feel

Bohemian Rhapsody Actions

MICRO ADJUSTMENTS

- Nothing {**Bright Pop**} - boosts the visibility & detail of the midtones on the image
- Really {**Neutral Pop**} - enhances depth & accentuates highlights
- Matters {**Dark Drop**} - reduces the midtones of the image
- Anyone {**Bright Contrast**} - adds depth & ups highlights for increased dynamic range
- Can {**Neutral Contrast**} - adds contrast for increased depth & dimension
- See {**Dark Contrast**} - adds contrast & deepens midtones & shadows
- Nothing {**Little Warmer**} - globally warms the image
- Really {**Little Cooler**} - globally cools the image
- Matters {**Little Greener**} - adds a gentle green shift to the highlights & midtones
- To {**Little Magenta-er**} - adds a gentle magenta shift to the highlights & midtones
- Me {**Soft Haze**} - adds a soft hazy wash to the image

CLASSIC B&W CONVERSION

- Any Way The Wind Blows - a rich, punchy black & white that pops your subject

RESIZE, SHARPEN & LOGO

- Web Exact Dimension Resize and Sharpen - play then select desired width or height
- Sharpen for Print - high pass sharpens in preparation for print
- Watermark/Logo Placement - allows you to grab your logo & place it anywhere on the photo

Bohemian Rhapsody Recipe Guide

Recipe

Gentle Light + Clean @ 100%, Exposure + + +, Pop The Subject - Clean @ 100%, Boost The Background - Clean @ 100%, Enhance The Sky - Cooler @ 75%, Is This Just Fantasy @ 100%, Is This The Real Life @ 100%, Carry On II @ 70% (All Over), Magnificoo @ 100% (Top Right), Just Gotta Get Out @ 70%, For Meeee @ 100% (On Mountains), Mama Mia II @ 100% (Inverted), We Will Rock You @ 40%, Really {Neutral Pop} @ 100%, We Are The Champions @ 100% (Erase off subject) & A Day At The Races @ 40%



Bohemian Rhapsody Recipe Guide

Recipe

Gentle Light + Clean @ 100%, Pop The Subject - Clean @ 100%, Boost The Background - Magenta @ 100%, Is This Just Fantasy @ 100%, Is This The Real Life @ 100%, Carry On II @ 100% (On Face), I'm Just A Poor Boy @ 80% (Erase Off Highlights @ 40%), Another One Bites The Dust @ 40%, An Evening At Live Aid @ 100%, Nothing @ 100%, Really {Neutral Pop} @ 100% & We Are The Champions @ 40% (Erase Off Sky)



Bohemian Rhapsody Recipe Guide

Recipe

Blue Hour Fix + Clean @ 40%, Gentle Light + Clean @ 100%, Pop The Subject - Magenta @ 60%, Boost The Background - Clean @ 100%, Is This The Real Life @ 100%, I Want To Break Free @ 50%, Another One Bites The Dust @ 100%, Carry On II @ 100% (On Face), Frightening Me @ 100%, Really {Neutral Pop} @ 100%, Really {Little Cooler} @ 100% & We Are The Champions @ 65% (Erase Off Subject)



Bohemian Rhapsody Recipe Guide

Recipe

Blue Hour Fix + Magenta @ 50%, Pop The Subject - Magenta @ 100%, Look Up To The Skies And See @ 100%, Carry On II @ 100% (On Face), Is This The Real Life @ 100%, I'm Just A Poor Boy (Erase off Highlights @ 40% then Decrease Opacity to 70%), Under Pressure @ 100%, Mama Mia II @ 100% (Inverted), Frightening Me @ 100%, Really @ 100%, Galileo Figaro & We Are The Champions @ 60%



Bohemian Rhapsody Recipe Guide

Recipe

Gentle Light + Magenta @ 100%, Pop The Subject - Clean @ 100%, Boost The Background - Magenta @ 100%, Is This Just Fantasy @ 100%, Is This The Real Life @ 100%, I'm Just A Poor Boy @ 80% (Erase 30% Off Highlights), Under Pressure @ 100%, Exposure + +, Really @ 100%, Mama Mia II @ 100% (Inverted) & We Are The Champions @ 30%



Bohemian Rhapsody Recipe Guide

Recipe

Gentle Light + Clean @ 100% (Erase Off Sky), Pop The Subject - Clean @ 100%, Enhance The Sky - Warmer @ 100%, Boost The Background - Clean @ 100%, Carry On II @ 100% (On Face), Look Up To The Skies And See @ 100%, Is This Just Fantasy @ 100%, Enhance The Sky - Warmer @ 40%, I'm Just A Poor Boy @ 60% (Erase 50% Off Highlights), Galileo Galileo II @ 30%, Under Pressure @ 100%, Really {Neutral Pop} @ 100%, Mama Mia I @ 50%, We Are The Champions @ 60%, Exposure + & Frightening Me @ 40%



Bohemian Rhapsody Recipe Guide

Recipe

Exposure ++, Gentle Light + Clean @ 135%, Pop The Subject - Clean @ 70%, Boost The Background - Clean @ 100%, Enhance The Sky - Warmer @ 100%, Right Outta Here @ 50%, Oh Baby @ 100%, Is This The Real Life @ 100%, Is This Just Fantasy @ 100%, Look Up To The Skies And See @ 100%, I'm Just A Poor Boy (Erase Off Highlights @ 40% then Decrease Opacity to 60%), Under Pressure @ 50%, Really {Neutral Pop} @ 100%, Carry On II @ 40% & Frightening Me @ 35%



Bohemian Rhapsody Recipe Guide

Recipe

Gentle Light + Clean @ 45%, Blue Hour Fix + Magenta @ 50%, Pop The Subject - Clean @ 50%, Boost The Background - Magenta @ 100%, Enhance The Sky - Warmer @ 100%, Look Up To The Skies And See @ 100%, Carry On II @ 60% (On Faces), Is This The Real Life @ 100%, Is This Just Fantasy @ 100%, I'm Just A Poor Boy (Erase Off Highlights @ 40% then Decrease Opacity to 70%), Open Your Eyes @ 40%, Galileo Galileo II @ 100%, Under Pressure @ 45%, To @ 100% (On Grass Only) & A Day At The Races @ 50%



Bohemian Rhapsody Recipe Guide

Recipe

Gentle Light + Clean @ 100%, Pop The Subject - Clean @ 100%, Boost The Background - Magenta @ 100%, Enhance The Sky - Clean @ 100%, Is This The Real Life @ 100%, Is This Just Fantasy @ 100%, Look Up To The Skies And See @ 100%, Carry On II @ 40% (On Faces), I'm Just A Poor Boy (Erase Off Highlights @ 45% then Decrease Opacity to 65%), We Will Rock You @ 60%, A Day At The Races @ 40%, Mama Mia II @ 100% (Inverted), Will You Let Me Go @ 40% (On Skin), We Are The Champions @ 60%, Really {Neutral Pop} @ 100% & For Me @100% (On Water)



Bohemian Rhapsody Recipe Guide

Recipe

Blue Hour Fix + Clean @ 60%, Gentle Light + Clean @ 100% (Erase 50% Off Clouds), Exposure + + + (Erase Off Clouds), Pop The Subject - Clean @ 100%, Boost The Background - Clean @ 100%, Enhance The Sky - Cooler @ 100%, Is This The Real Life @ 100 %, Look Up To The Skies And See @ 100%, I'm Just A Poor Boy @ 60% (Erase Off Highlights @ 45%), Spit In My Eye @ 100%, Love Me And Leave Me @ 15%, Oh Baby @ 15%, For Meeee @ 100% (On Mountains), We Will Rock You @ 60% (Erase Off Subject), Mama Mia II @ 100% (Inverted), A Day At The Races @ 60%, Frightening Me (On Background), Nothing @ 50%, Anyone @ 15% & Mama Mia I @ 50%



Bohemian Rhapsody Recipe Guide

Recipe

Gentle Light + Clean @ 100%, Carry On II @ 100% (On Family), Pop The Subject - Clean @ 100%, Boost The Background - Clean @ 100%, Enhance The Sky - Clean @ 100%, Is This Just Fantasy @ 100%, Is This The Real Life @ 100%, Look Up To The Skies And See @ 100%, Love Me And Leave Me @ 100%, I'm Just A Poor Boy @ 75% (Erase Off Highlights @ 40%), I Need No Sympathy @ 25%, I Want To Break Free @ 40%, Galileo Figaro @ 30% (Top Right), Nothing @ 100%, Really {Neutral Pop} @ 100%, For Meeee @ 100% (Top of Mountains), Mama Mia II @ 100% (Inverted), We Are The Champions @ 100% (On Background) & A Day At The Races @ 60%.



Bohemian Rhapsody Recipe Guide

Recipe

Blue Hour Fix + Clean @ 100%, Carry On II @ 100% (On Subject), Pop The Subject - Clean @ 100%, Enhance The Sky - Clean @ 100%, Boost The Background - Magenta @ 100%, Is This The Real Life @ 100%, Look Up To The Skies And See @ 100%, I'm Just A Poor Boy @ 70% (Erase Off Highlights @ 50%), Galileo Figaro @ 100% (Top of Image), Under Pressure @ 100%, We Are The Champions @ 50% (On Background), Mama Mia II @ 100% (Inverted), Nothing @ 100%, Really {Neutral Pop} @ 100% & Frightening Me @ 50%



Bohemian Rhapsody Recipe Guide

Recipe

Gentle Light + Clean @ 100%, Pop The Subject - Clean @ 100%, Enhance The Sky - Clean @ 100%, Enhance The Sky - Warmer @ 100%, Boost The Background - Clean @ 100%, Is This Just Fantasy @ 100% (Erase Off Sky), Look Up To The Skies And See @ 100%, For Meeee @ 100% (On Mountains), I'm Just A Poor Boy @ 65% (Erase Off Highlights @ 35%), Never Let You Go @ 100% (On Clouds), Spit In My Eye @ 100% (On Water), Really {Little Cooler} 100% (On Water) & 50% (On Sky), For Me @ 100% (On Grass), We Will Rock You @ 50%, Nothing @ 100%, An Evening At Live Aid @ 100%, I Need No Sympathy @ 30% (On Highlights), I Need No Sympathy @ 30% (On Highlights), We Are The Champions @ 75% (Erase Off Subject), Frightening Me @ 100%, Will You Let Me Go @ 50% (On Skin), Really {Neutral Pop} @ 50% & Can @ 50%



Bohemian Rhapsody Recipe Guide

Recipe

Overcast Lift + Clean @ 100%, Pop The Subject - Clean @ 50%, Enhance The Sky - Cooler @ 50% (On Mountain & Water), Is This The Real Life @ 100%, Look Up To The Skies And See @ 100%, Carry On II @ 50% (On Subject), I'm Just A Poor Boy (Erase off Highlights @ 40% then Decrease Opacity to 60%), I Want It All @ 35%, Will You Let Me Go @ 60% (On Skin), For Me @ 100% (On Water), Mama Mia II @ 100% (Inverted), Really {Neutral Pop} @ 100%, Nothing @ 50% (On Trees) & Exposure + @ 100%



Bohemian Rhapsody Recipe Guide

Recipe

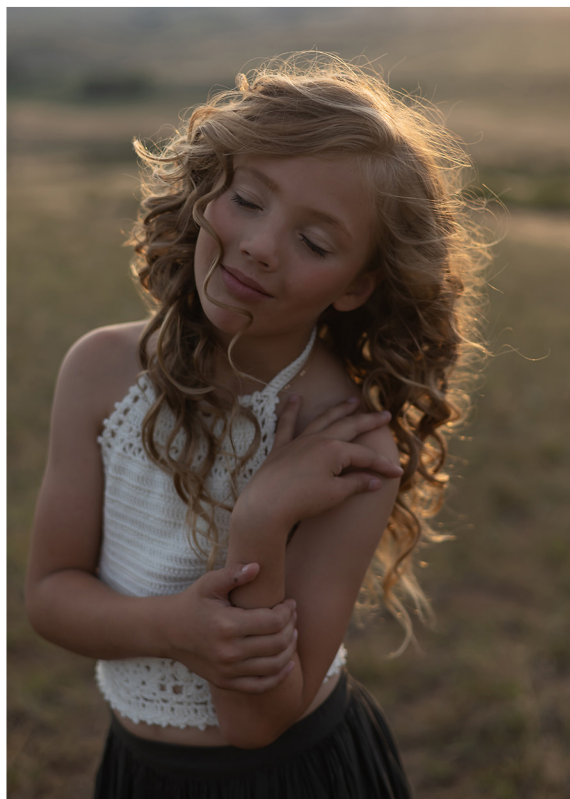
Blue Hour Fix + Clean @ 100%, Gentle Light + Clean @ 100%, Pop The Subject - Magenta @ 100%, Enhance The Sky - Clean @ 200%, Boost The Background - Green @ 100%, Is This Just Fantasy @ 100%, Is This The Real Life @ 100%, I'm Just A Poor Boy @ 75% (Erase Off Highlights @ 50%), Look Up To The Skies And See @ 100%, Carry On II @ 70%, Under Pressure @ 50%, Never Let You Go @ 100% (On Sky), Really {Neutral Pop} @ 100%, A Day At The Races @ 70%, We Are The Champions @ 60% (On Background) & Magnificoo @ 45% (Top Right)



Bohemian Rhapsody Recipe Guide

Recipe

Gentle Light + Clean @ 100%, Exposure + +, Pop The Subject - Clean @ 100%, Boost The Background - Clean @ 100%, Is This The Real Life @ 100%, Is This Just Fantasy @ 100%, Look Up To The Skies And See @ 100%, Carry On II @ 70% (On Face), No Escape From Reality @ 40%, Galileo Figaro @ 100% (Top of Image), I'm Just A Poor Boy @ 75% (Erase Off Highlights @ 40%), Under Pressure @ 50%, I See A Little @ 100%, I Need No Sympathy @ 40% (On Subject), Mama Mia I @ 40% (On Details), Mama Mia II @ 100% (Inverted), We Are The Champions @ 50% (On Background), Really {Neutral Pop} @ 100% & Frightening Me @ 30%



Bohemian Rhapsody Recipe Guide

Recipe

Overcast Lift + Magenta @ 100%, Is This The Real Life @ 60%, Boost The Background - Magenta @ 100%, Is This The Real Life @ 100%, Look Up To The Skies And See @ 100%, Mama Mia II @ 100% (Inverted), Carry On II @ 100% (On Subjects), For Me @ 200% (On Water), You're My Best Friend @ 20%, I Want To Break Free @ 20%, Mama Mia II @ 100% (On Background), Really {Neutral Pop} @ 100%, Exposure + @ 50%, I Need No Sympathy @ 20% (On Highlights), Carry On I @ 100% (On Little Girl) & A Day At The Races @ 50%



Bohemian Rhapsody Recipe Guide

Recipe

Gentle Light + Clean @ 100% (Erase Off Sky), Carry On II @ 100% (On Family), Pop The Subject - Clean @ 100%, Enhance The Sky - Clean @ 100%, Boost The Background - Magenta @ 100%, Is This The Real Life @ 100%, Is This Just Fantasy @ 20%, I'm Just A Poor Boy @ 60% (Erase Off Highlights @ 45%), I Need No Sympathy @ 30% (On Highlights), Galileo Galileo II @ 100% (Top Right), I Want To Break Free @ 30%, Under Pressure @ 20%, Oh Baby @ 100%, Really {Neutral Pop} @ 100%, Nothing @ 50%, We Are The Champions @ 60%, Mama Mia II @ 90% & A Day At The Races @ 50%



Bohemian Rhapsody Recipe Guide

Recipe

Gentle Light + Clean @ 100% (Erase Off Sky), Twilight Boost + Clean @ 25%, Pop The Subject - Clean @ 100%, Enhance The Sky - Clean @ 100%, Boost The Background - Clean @ 100%, Is This Just Fantasy @ 100%, Look Up To The Skies And See @ 100%, Carry On II @ 100% (On Subject), I'm Just A Poor Boy @ 70% (Erase Off Highlights @ 50%), Galileo Galileo II @ 40% (Top Left), Under Pressure @ 100%, An Evening At Live Aid @ 100% (Erase Details), Nothing @ 100%, Really {Neutral Pop} @ 60%, A Day At The Races @ 50%, Matters @ 30%, We Are The Champions @ 50% (Erase Off Subject) & Mama Mia I @ 50% (On Details)



Bohemian Rhapsody Recipe Guide

Recipe

Gentle Light + Clean @ 100%, Carry On II @ 100% (On Subject), Never Let You Go @ 100% (On Shirt), Pop The Subject - Clean @ 100%, Boost The Background - Magenta @ 100%, Is This Just Fantasy @ 100%, I'm Just A Poor Boy @ 70% (Erase Off Highlights @ 50%), Under Pressure @ 60%, Really {Neutral Pop} @ 100%, Nothing @ 100%, Mama Mia II @ 100%, Galileo Galileo II @ 50% (Top Middle), Frightening Me @ 100%, We Are The Champions @ 50% (On Background) & Mama Mia I @ 40% (On Details)



Bohemian Rhapsody Recipe Guide

Recipe

Radiant Light + Clean @ 100%, Pop The Subject - Magenta @ 100%, Boost The Background - Magenta @ 100%, Is This The Real Life @ 100%, Is This Just Fantasy @ 100%, Look Up To The Skies And See @ 100%, Carry On II @ 50% (On Subject), I'm Just A Poor Boy (Erase Off Highlights @ 50% then Decrease Opacity to 60%), Mama Mia II @ 100% (Inverted), Under Pressure @ 50%, Mama Mia II @ 100% (Inverted), Really {Neutral Pop} @ 100% & Frightening Me @ 25%



Bohemian Rhapsody Recipe Guide

Recipe

Gentle Light + Clean @ 100%, Pop The Subject - Clean @ 100%, Look Up To The Skies And See @ 100%, Carry On II @ 100% (On Face), Is This Just Fantasy @ 100%, Is This The Real Life @ 30%, I'm Just A Poor Boy @ 75% (Erase Off Highlights @ 45%), I Need No Sympathy @ 30% (On Face), Can @ 30%, We Will Rock You @ 45%, We Are The Champions @ 50% (Erase Off Face), Nothing @ 100%, Really {Neutral Pop} @ 100%, Mama Mia II @ 100% (Inverted), A Day At The Races @ 50% & Will You Let Me Go @ 100% (On Hands)



Bohemian Rhapsody Recipe Guide

Recipe

Gentle Light + Clean @ 100%, Boost The Background - Magenta @ 100%, Pop The Subject - Magenta @ 100%, Is This The Real Life @ 100%, Look Up To The Skies And See @ 100%, Carry On II @ 100% (On Face), I'm Just A Poor Boy @ 70% (Erase Off Highlights @ 40%), Under Pressure @ 40%, Really {Neutral Pop} @ 50%, Mama Mia II @ 100% (Inverted), Mama Mia I @ 100% & Little High @ 40% (On Background)



Bohemian Rhapsody Recipe Guide

Recipe

Gentle Light + Clean @ 100%, Pop The Subject - Clean @ 100%, Enhance The Sky - Clean @ 100%, Boost The Background - Clean @ 100%, Is This Just Fantasy @ 100%, Look Up To The Skies And See @ 100%, Carry On II @ 50% (On Subject), I'm Just A Poor Boy @ 75% (Erase Off Highlights @ 40%), Right Outta Here @ 100%, Under Pressure @ 100%, Really {Neutral Pop} @ 50%, Galileo Figaro @ 50%, Mama Mia I @ 100%, We Are The Champions @ 50% (On Background), Frightening Me @ 30% & A Day At The Races @ 50%



Bohemian Rhapsody Recipe Guide

Recipe

Gentle Light + Clean @ 100%, Blue Hour Fix + Clean @ 25%, Pop The Subject - Clean @ 100%, Enhance The Sky - Clean @ 100%, Boost The Background - Clean @ 100%, Is This Just Fantasy @ 100%, Is This The Real Life @ 100%, I'm Just A Poor Boy @ 65% (Erase Off Highlights @ 50%), Enhance The Sky - Warmer @ 70%, Under Pressure @ 60%, Really {Neutral Pop} @ 100%, Nothing @ 100%, Matters @ 30% & I See A Little @ 20%



Bohemian Rhapsody Recipe Guide

Recipe

Radiant Light + Clean @ 50%, Gentle Light + Clean @ 35%, Pop The Subject - Clean @ 100%, Boost The Background - Clean @ 100%, Is This The Real Life @ 100%, Is This Just Fantasy @ 100%, I'm Just A Poor Boy @ 70% (Erase Off Highlights @ 45%), Look Up To The Skies And See @ 100%, I Want It All @ 65%, Frightening Me @ 40%, Galileo Galileo II @ 100%, Really {Neutral Pop} @ 100%, To @ 20%, Anyone @ 20% & Mama Mia I @ 50%



Bohemian Rhapsody Recipe Guide

Recipe

Blue Hour Fix + Clean @ 40%, Gentle Light + Clean @ 100% (Erase 100% Off Clouds), Pop The Subject - Clean @ 100%, Enhance The Sky - Clean @ 100%, Boost The Background - Clean @ 100%, Is This Just Fantasy @ 100%, Look Up To The Skies And See @ 100%, Carry On II @ 100% (On Subject), I'm Just A Poor Boy @ 80% (Erase Off Highlights @ 40%), Galileo Figaro @ 25% (Top Left), Another One Bites The Dust @ 50%, An Evening At Live Aid @ 100%, Really {Neutral Pop} @ 100%, Very Very @ 60% (Erase Off Subject), Really {Little Cooler} @ 25% & Nothing @ 100% (On Subject)



Bohemian Rhapsody Recipe Guide

Recipe

Gentle Light + Clean @ 100%, Carry On II @ 100% (On Subjects), I Need No Sympathy @ 100% (On Shadows of Subject), Pop The Subject - Clean @ 100%, Enhance The Sky - Clean @ 100%, Boost The Background - Clean @ 100%, Is This Just Fantasy @ 100%, I'm Just A Poor Boy @ 70% (Erase Off Highlights @ 40%), Carry On I @ 100% (On Mountains), Under Pressure @ 100%, Let Me Go @ 100% (On Skin), Frightening Me @ 100%, Really {Neutral Pop} @ 100%, Never Let You Go @ 60% (On Sky), Right Outta Here @ 40% (On Sky) & Scaramouch I @ 50%

